
Role of Mini Grids in enabling 24/7 power for all

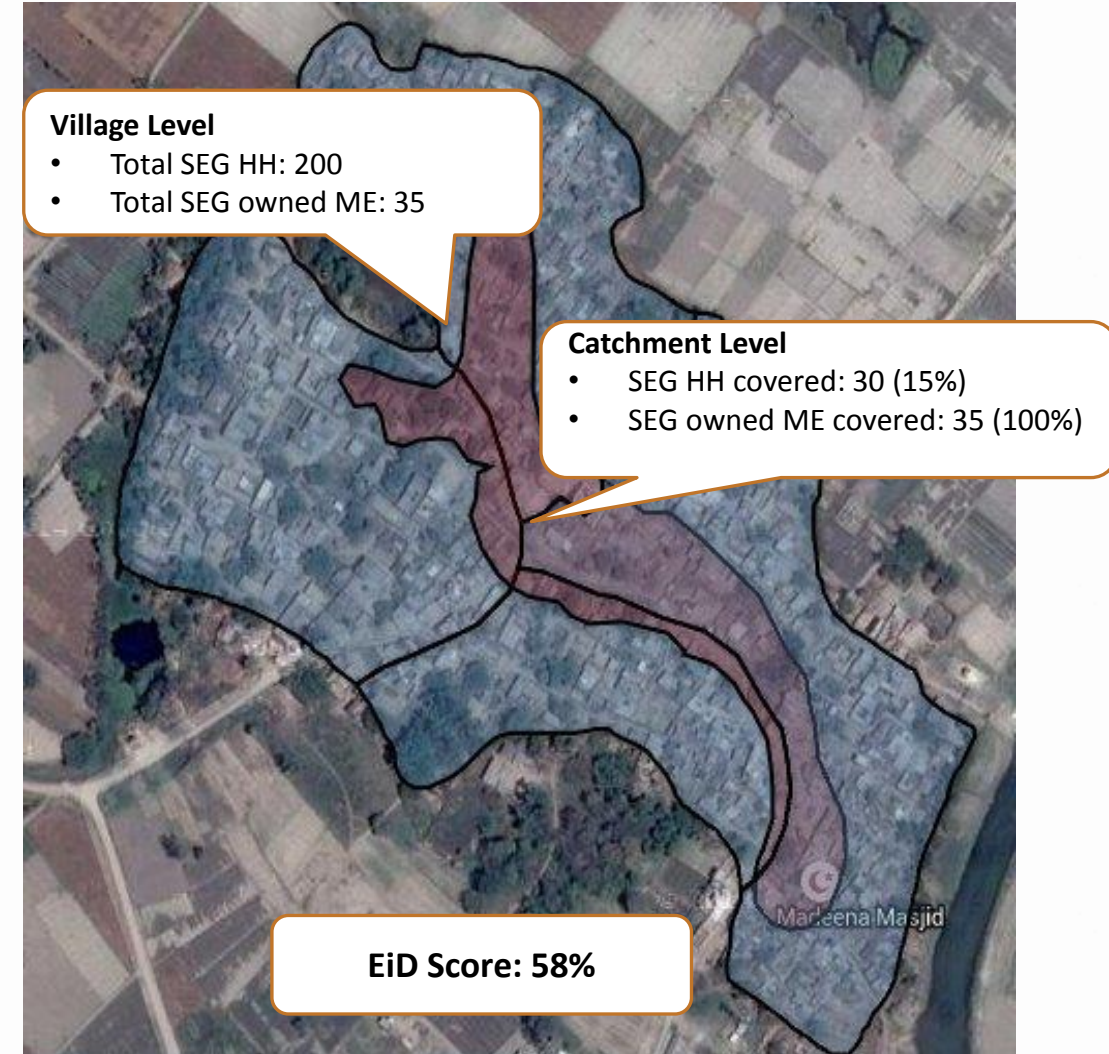
Swapnil Shekhar



Measurement of Equity: Design

Measuring Equity in Design

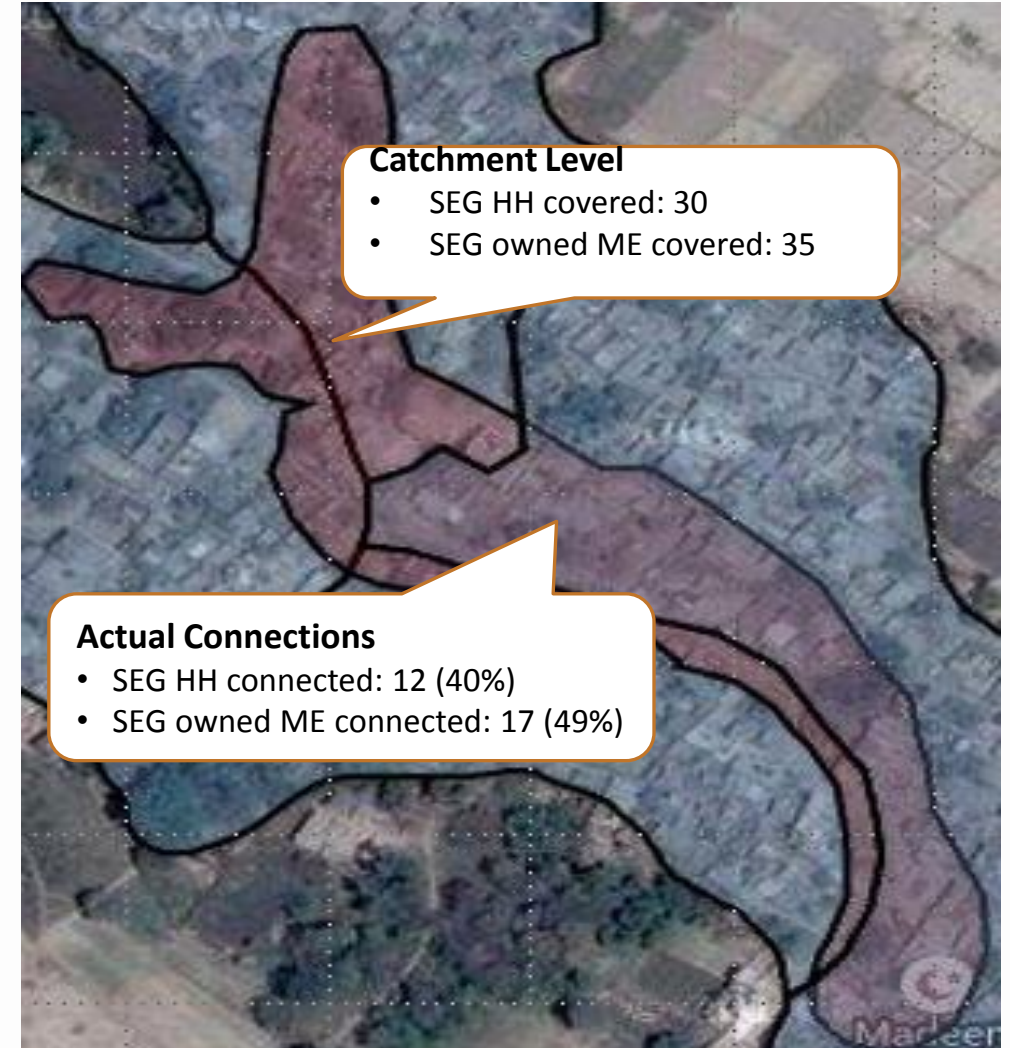
- **Equity in Design (EiD) score** to be assigned to each site
- Parameters to be considered for measuring EiD score:
 - **Proportion of SEG HHs** out of total SEG HHs in the village covered under the catchment
 - **Proportion of SEG owned MEs** out of total SEG owned MEs in the village
- **EiD Score:** Composite score of the above parameters with equal weights assigned to both



Measurement of Equity: Execution

Measuring Equity in Execution

- **Equity in Execution (EiE) score** to be assigned to each site
- Parameters to be considered for measuring EiE score:
 - **Proportion of SEG HHs** connected out of total SEG HHs covered under the catchment
 - **Proportion of SEG owned MEs** connected out of total MEs covered under the catchment
- **EiE Score:** Composite score of the above parameters with equal weights assigned to both
- **Overall Equity Score:** Composite score of the above parameters with 30% weight assigned to EiD score and 70% weight assigned to EiE score



How do we measure Economic Welfare

GDP + Environment & Social Benefits

- **Measurement of economic welfare**

- **Economic**

- Calculating the value of the marketable economic activity within the economy (village).
- Adopting the **expenditure approach** to measure GDP of the village (C+I+G+X-M)

- **Social**

- Improvement in social capital (time saved due to increased ease of domestic chores; ease in communication, ease in mobility etc.)

- **Environmental**

- Improvement in environmental capital (reduced stress on fossil fuel based electricity sources)

- **How do we use the data?**

- Site specific GDP+ scores will be tracked over time
- To calculate Δ attributable to intervention = (GDP+) @T1 - (GDP+) @T2

Village GDP Per Capita (In USD)

